



## *Pine Model*

Q-1070 | The Signature Series

This ranch plan has 3 bedrooms, 2 baths with the family and living room as the central hub of the home. The family room opens to a large kitchen with island and dining area and the laundry room is convenient to all bedrooms. Options include a master suite sitting room, an extended front porch, screen porch and 3 plan choices for your master bathroom.

Jay Osborough *direct* (757) 724-4710 | *office* (757) 923-4450  
kffsales@terrypeterson.com | [www.kingsforkfarmva.com](http://www.kingsforkfarmva.com)



*Another fine community by Terry-Peterson Residential. Sales by Rose & Womble Realty*

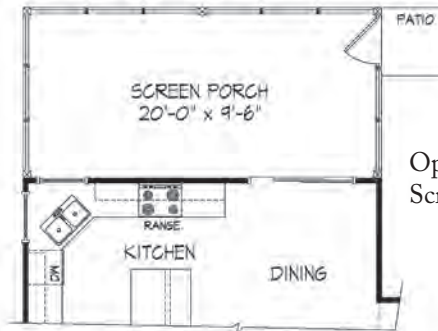
This information is deemed correct at the time of publication, but it is not warranted and is subject to change without notice. Builder reserves the right to modify or change plans, specifications, features and prices without notice. Renderings where shown are an artist's conception only. All dimensions and sizes are approximate.



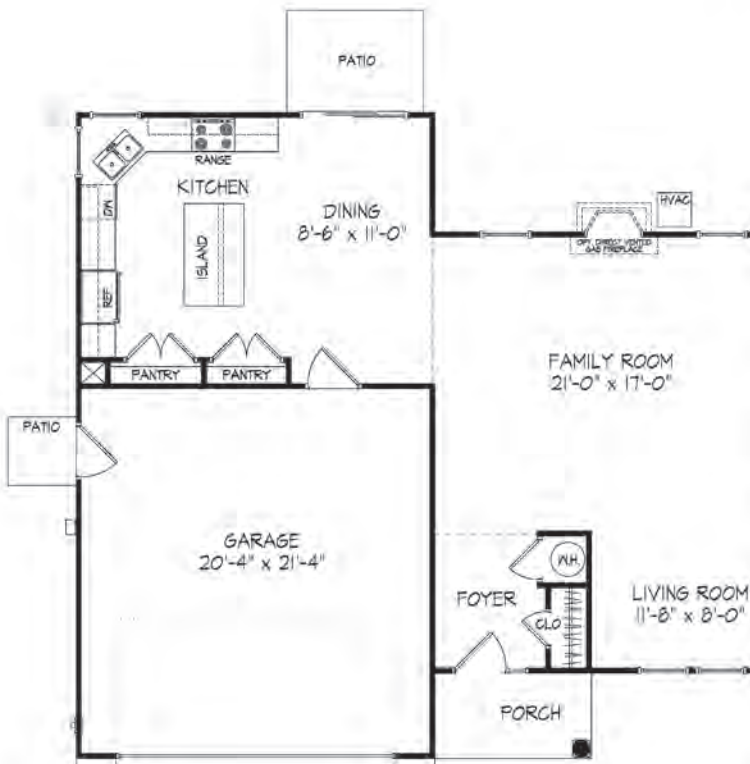


# Pine Model

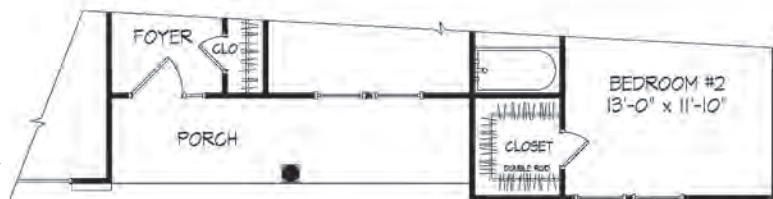
Q-1070  
1894 Square Feet  
3 Bedrooms, 2 Baths



Optional  
Screen Porch



Extended Porch Option



Bath #1 Optional Plan A



Bath #1 Optional Plan B



Optional Master  
Sitting Room Plan





## *Redwood Model*

R -1070 | The Signature Series

This elevation shows the extended front porch option for Q and R plans. This ranch home has 4 bedrooms and 2 baths - or use the 4th bedroom as a game room or office. The large family room is the central hub that adjoins a large kitchen with island and dining area. The laundry room is convenient to all bedrooms. Options include a master suite sitting room, screen porch and 3 plan choices for your master bathroom.

**Jay Osborough** *direct* (757) 724-4710 | *office* (757) 923-4450  
kffsales@terrypeterson.com | [www.kingsforkfarmva.com](http://www.kingsforkfarmva.com)



*Another fine community by Terry-Peterson Residential. Sales by Rose & Womble Realty*

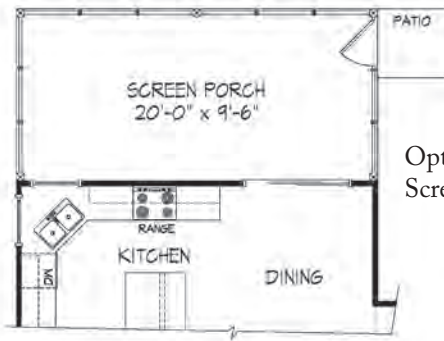
*This information is deemed correct at the time of publication, but it is not warranted and is subject to change without notice. Builder reserves the right to modify or change plans, specifications, features and prices without notice. Renderings where shown are an artist's conception only. All dimensions and sizes are approximate.*



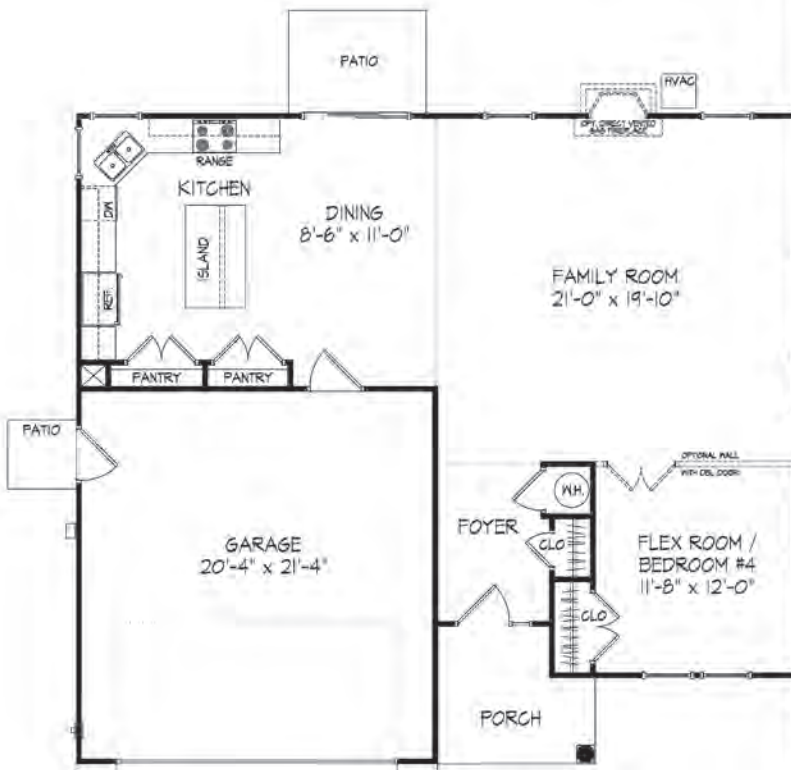


# Redwood Model

R-1070  
2021 Square Feet  
3-4 Bedrooms, 2 Baths



Optional  
Screen Porch



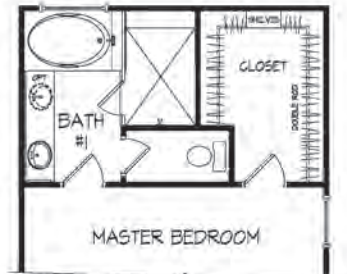
Extended Porch Option



Bath #1 Optional Plan A



Bath #1 Optional Plan B



Optional Master  
Sitting Room Plan





## *Spring Birch Model*

S -1070 B | The Signature Series

This ranch plan has 4 bedrooms, 2 baths with kitchen and island open to the dining area and family room. Use the 4th bedroom as a game room or home office. Options include a sitting room in the master suite, an extended front porch and 3 plan choices for your master bathroom.

**Jay Osborough** *direct* (757) 724-4710 | *office* (757) 923-4450  
kffsales@terrypeterson.com | www.kingsforkfarmva.com



*Another fine community by Terry-Peterson Residential. Sales by Rose & Womble Realty*

*This information is deemed correct at the time of publication, but it is not warranted and is subject to change without notice. Builder reserves the right to modify or change plans, specifications, features and prices without notice. Renderings where shown are an artist's conception only. All dimensions and sizes are approximate.*





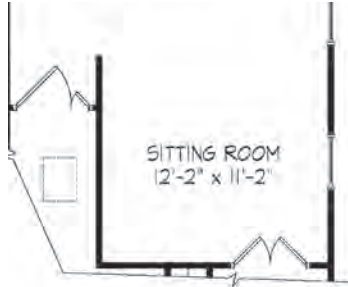
# Spring Birch

S-1070

2277 Square Feet

4 Bedrooms, 2 Baths

Optional Master Sitting Room



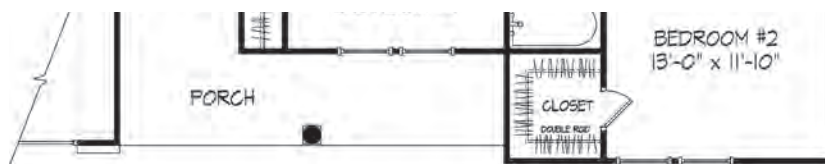
Optional Bath #1 ~ Plan A



Optional Bath #1 ~ Plan B



Extended Porch Option



This information is deemed correct at the time of publication, but it is not warranted and is subject to change without notice. Builder reserves the right to modify or change plans, specifications, features and prices without notice. Renderings where shown are an artist's conception only. All dimensions and sizes are approximate.







## *Sequoia Model*

S-1071 A | The Signature Series

This ranch plan elevation shows the optional extended front porch and has 4 bedrooms, 2 baths with a large kitchen, dining area and family room that open to a screen porch in back. Options include a sitting room off the master suite, an extended front porch option and 3 choices for your master bathroom.

Jay Osborough *direct* (757) 724-4710 | *office* (757) 923-4450  
kffsales@terrypeterson.com | [www.kingsforkfarmva.com](http://www.kingsforkfarmva.com)



*Another fine community by Terry-Peterson Residential. Sales by Rose & Womble Realty*

This information is deemed correct at the time of publication, but it is not warranted and is subject to change without notice. Builder reserves the right to modify or change plans, specifications, features and prices without notice. Renderings where shown are an artist's conception only. All dimensions and sizes are approximate.





# Sequoia Model

S-1071

2277 Square Feet

4 Bedrooms, 2 Baths

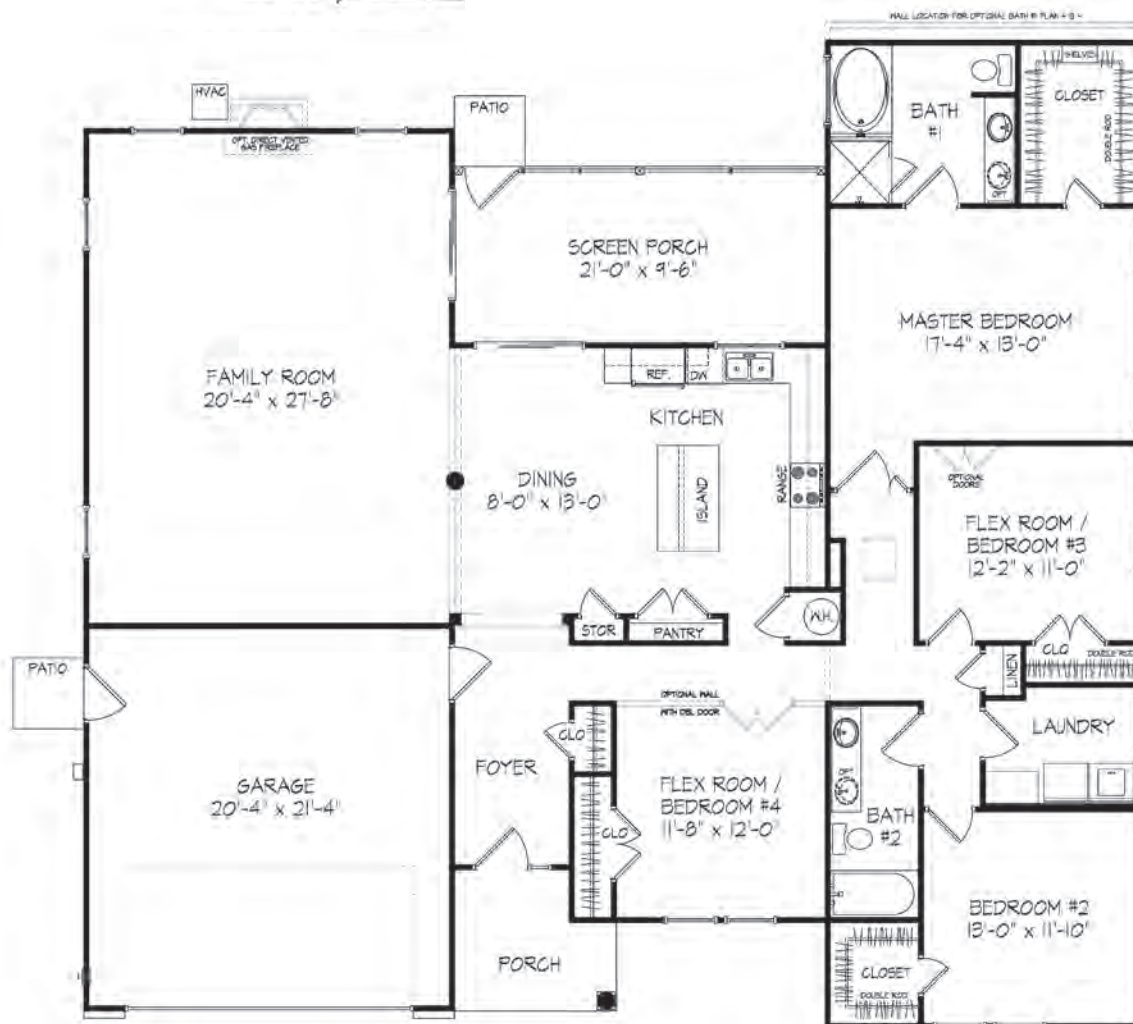
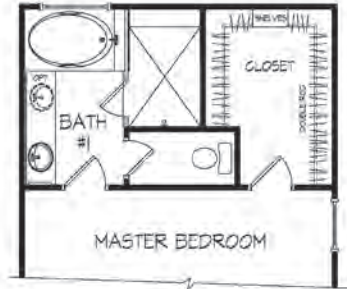
Optional Master Sitting Room



Optional Bath #1 ~ Plan A



Optional Bath #1 ~ Plan B



Extended Porch Option







## *Torrey Pine Model*

T-1070 A | The Signature Series

This traditional 2-story has 4 bedrooms, 2.5 baths with kitchen and island open to the dining area and large family and living rooms. The first floor bedroom at the front of the home can be used as a office/flex room. Upstairs, your laundry room is convenient to all bedrooms including a large master suite. Options include a screen porch, bathroom plan and master closet expansion.

**Jay Osborough** *direct* (757) 724-4710 | *office* (757) 923-4450  
kffsales@terrypeterson.com | www.kingsforkfarmva.com



*Another fine community by Terry-Peterson Residential. Sales by Rose & Womble Realty*

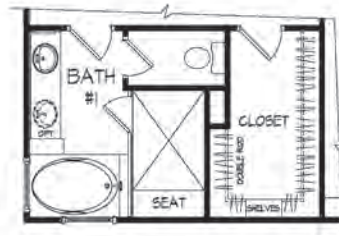
This information is deemed correct at the time of publication, but it is not warranted and is subject to change without notice. Builder reserves the right to modify or change plans, specifications, features and prices without notice. Renderings where shown are an artist's conception only. All dimensions and sizes are approximate.



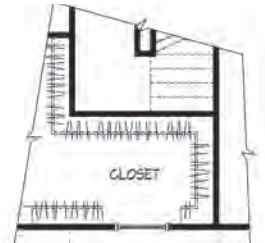


# Torrey Pine Model

T-1070  
2193 Square Feet  
4 Bedrooms, 2.5 Baths



Optional Master Bath #1

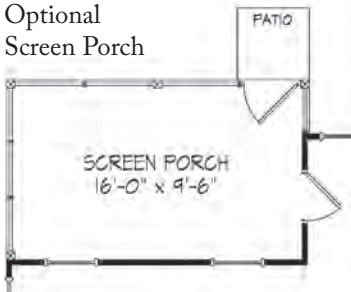


Optional Master Closet Expansion Over Stairs

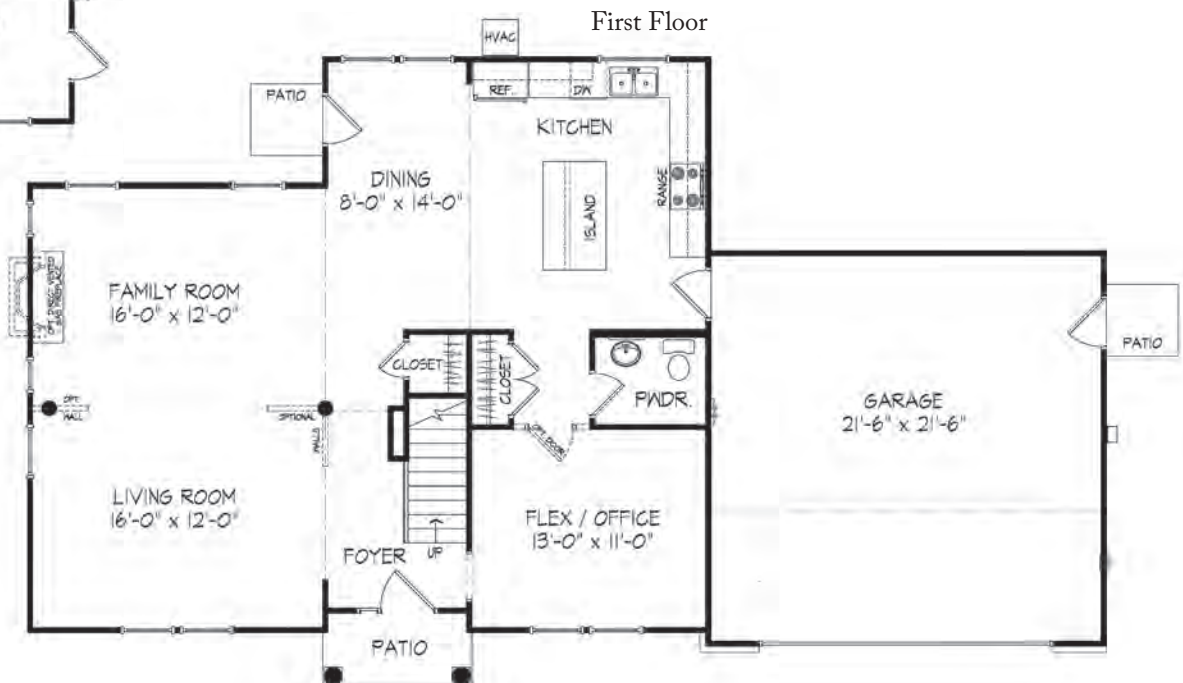
Second Floor



Optional Screen Porch



First Floor







## *Texas Oak Model*

T-1071 A | The Signature Series

This 5 bedrooms, 2.5 baths has plenty of living space with a first floor bedroom that can be used as an optional flex/office room. A large kitchen and dining area opens to the family and living rooms. Upstairs, a large master suite, laundry room and 5th bedroom or game room provide even more extra space for growing families. Options include a screen porch, second master bath plan and master closet expansion.

Jay Osborough *direct* (757) 724-4710 | *office* (757) 923-4450  
kffsales@terrypeterson.com | www.kingsforkfarmva.com



*Another fine community by Terry-Peterson Residential. Sales by Rose & Womble Realty*

This information is deemed correct at the time of publication, but it is not warranted and is subject to change without notice. Builder reserves the right to modify or change plans, specifications, features and prices without notice. Renderings where shown are an artist's conception only. All dimensions and sizes are approximate.



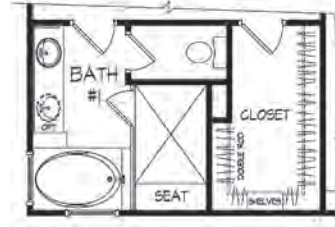


# Texas Oak Model

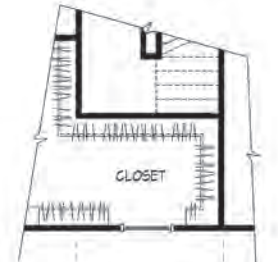
T-1071

2514 Square Feet

5 Bedrooms, 2.5 Baths

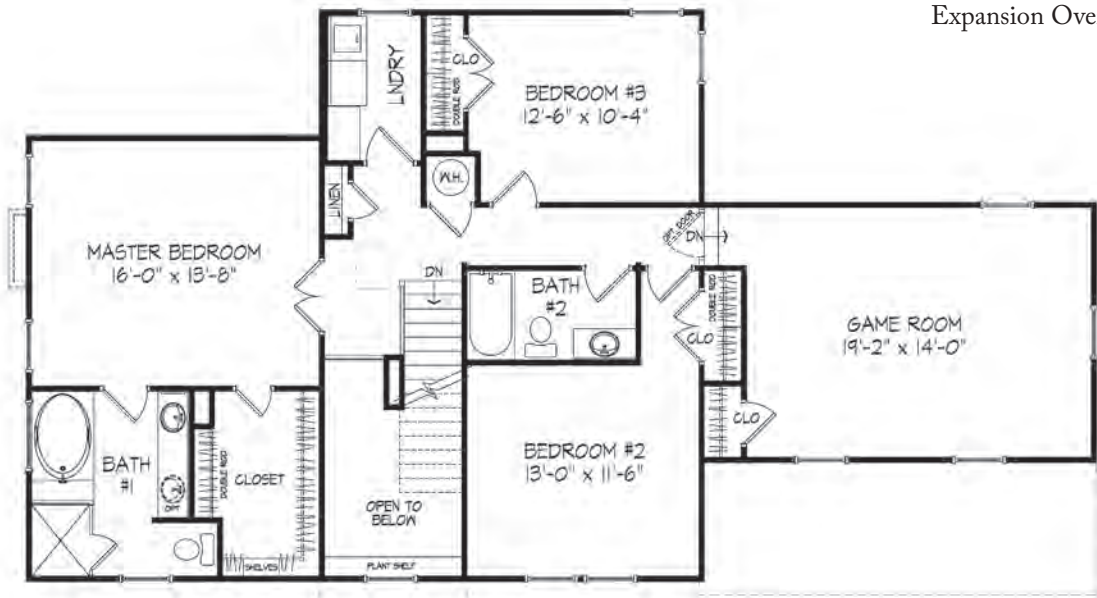


Optional Master Bath #1

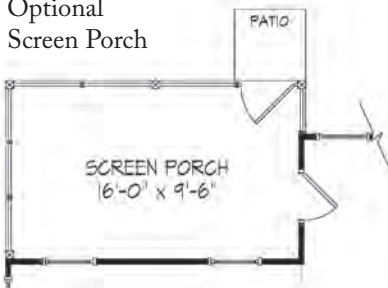


Optional Master Closet Expansion Over Stairs

Second Floor



Optional Screen Porch



First Floor



This information is deemed correct at the time of publication, but it is not warranted and is subject to change without notice. Builder reserves the right to modify or change plans, specifications, features and prices without notice. Renderings where shown are an artist's conception only. All dimensions and sizes are approximate.







## *Timberline Model*

T-1072 | The Signature Series

This 4 bedroom, 2.5 bath open plan has a first floor bedroom that can be used as an optional flex/office room. A large kitchen with island and dining area flows into a large family and living room. Upstairs, your laundry room is convenient to all bedrooms including a large master suite. Options include a large screen porch, optional master bath and master closet expansion.

**Jay Osborough** *direct* (757) 724-4710 | *office* (757) 923-4450  
kffsales@terrypeterson.com | [www.kingsforkfarmva.com](http://www.kingsforkfarmva.com)



*Another fine community by Terry-Peterson Residential. Sales by Rose & Womble Realty*

This information is deemed correct at the time of publication, but it is not warranted and is subject to change without notice. Builder reserves the right to modify or change plans, specifications, features and prices without notice. Renderings where shown are an artist's conception only. All dimensions and sizes are approximate.



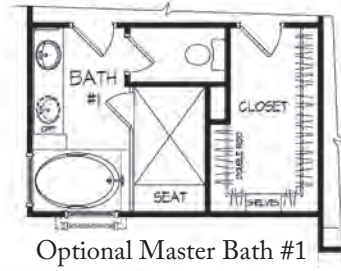


# *Timberline Model*

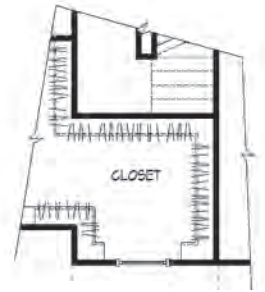
T-1072

2193 Square Feet

4 Bedrooms, 2.5 Baths



Optional Master Bath #1

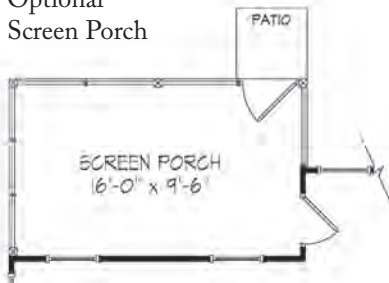


Optional Master Closet Expansion Over Stairs



Second Floor

Optional Screen Porch



First Floor







## *Tanoak Model*

### T-1073 | The Signature Series

Live large and easy in this 5 bedroom, 2.5 bath home with a first floor bedroom that can be used as an optional flex/office room. The open plan with large kitchen and dining area flows into the family and living rooms. Upstairs, a large master suite, laundry room and 5th bedroom/game room provides even more extra space for growing families. Options include a screen porch, a second master bath plan and master closet expansion.

**Jay Osborough** *direct* (757) 724-4710 | *office* (757) 923-4450  
kffsales@terrypeterson.com | [www.kingsforkfarmva.com](http://www.kingsforkfarmva.com)



*Another fine community by Terry-Peterson Residential. Sales by Rose & Womble Realty*

This information is deemed correct at the time of publication, but it is not warranted and is subject to change without notice. Builder reserves the right to modify or change plans, specifications, features and prices without notice. Renderings where shown are an artist's conception only. All dimensions and sizes are approximate.





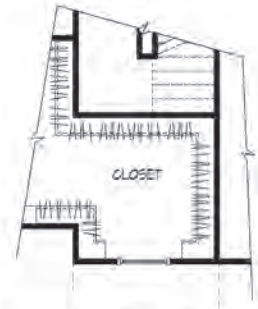
# Tanoak Model

T-1073

2514 Square Feet

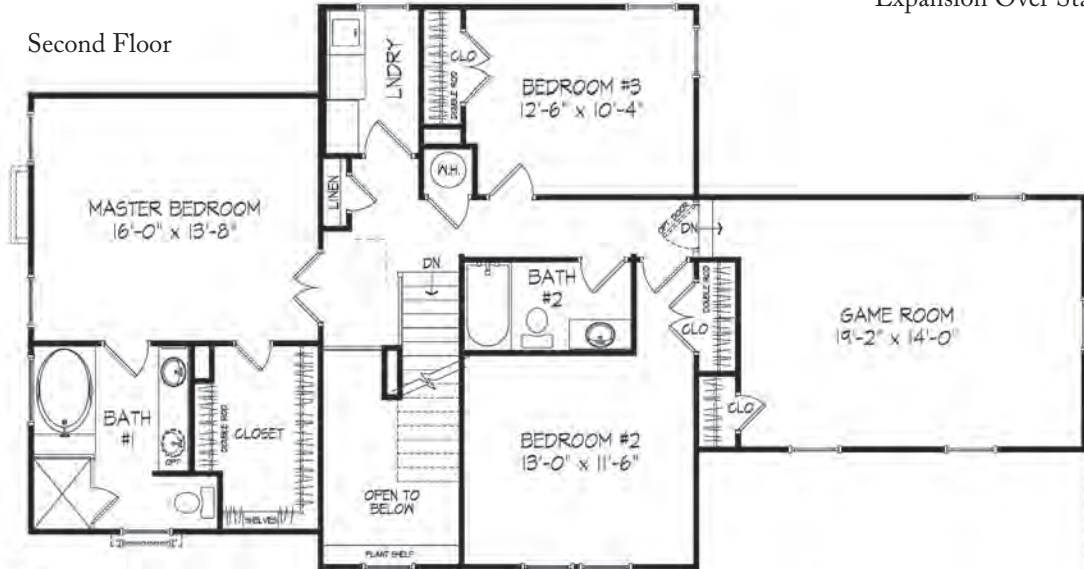
5 Bedrooms, 2.5 Baths

Optional Master Bath #1

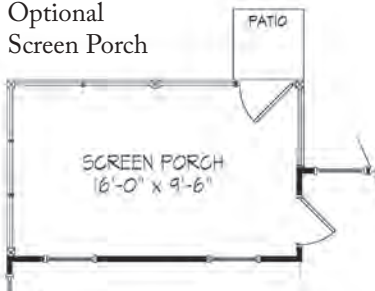


Optional Master Closet Expansion Over Stairs

Second Floor



Optional Screen Porch



First Floor







## *Walnut Model*

### W-1070 A | The Signature Series

First Floor Bedroom ~ This home boasts over 3000 square feet with 5 bedrooms, 3 baths, or use the downstairs bedroom as a flex/office. Upstairs, your laundry room is convenient to all bedrooms including a large master suite and a game room with closet can be a 5th bedroom. Options include a screen porch, master bath plan and master closet expansion.

Jay Osborough (757) 923-4450  
kffsales@terrypeterson.com | [www.kingsforkfarmva.com](http://www.kingsforkfarmva.com)



*Another fine community by Terry-Peterson Residential. Sales by Rose & Womble Realty*

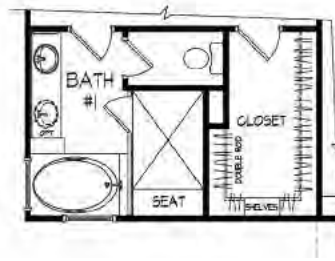
*This information is deemed correct at the time of publication, but it is not warranted and is subject to change without notice. Builder reserves the right to modify or change plans, specifications, features and prices without notice. Renderings where shown are an artist's conception only. All dimensions and sizes are approximate.*



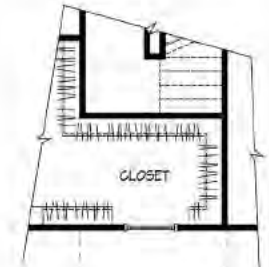


# Walnut Model

W-1070  
3039 Square Feet  
5 Bedrooms, 3 Baths



Optional Master Bath #1

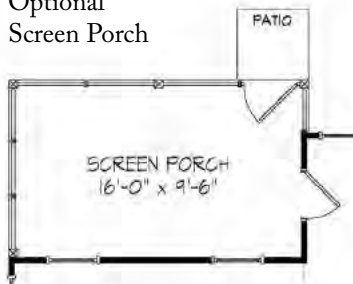


Optional Master Closet Expansion Over Stairs

Second Floor



Optional Screen Porch



First Floor







## *Winterberry Model*

W-1072 B | The Signature Series

First Floor Bedroom ~ Enjoy plenty of living space in this 5 bedroom, 2.5 bath home with a large kitchen with island and dining area that open to the family and living rooms. As an option, use the downstairs bedroom as a flex/office. Upstairs, a large master suite, laundry room and 5th bedroom/game room provide even more extra space for growing families. Options include a screen porch, a master bath plan and master closet expansion.

Jay Osborough (757) 923-4450  
kffsales@terrypeterson.com | [www.kingsforkfarmva.com](http://www.kingsforkfarmva.com)



*Another fine community by Terry-Peterson Residential. Sales by Rose & Womble Realty*

*This information is deemed correct at the time of publication, but it is not warranted and is subject to change without notice. Builder reserves the right to modify or change plans, specifications, features and prices without notice. Renderings where shown are an artist's conception only. All dimensions and sizes are approximate.*



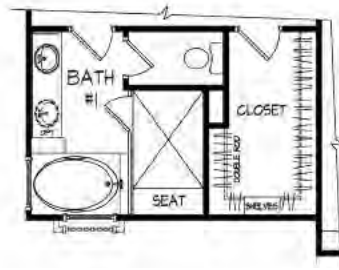


# Winterberry Model

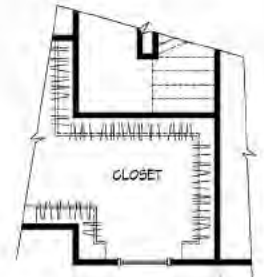
W-1072

3038 Square Feet

5 Bedrooms, 3 Baths

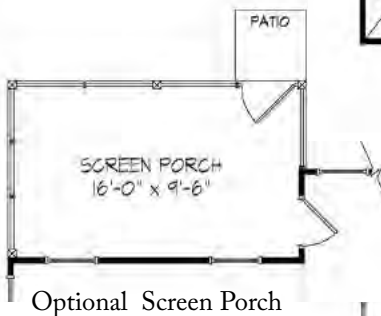
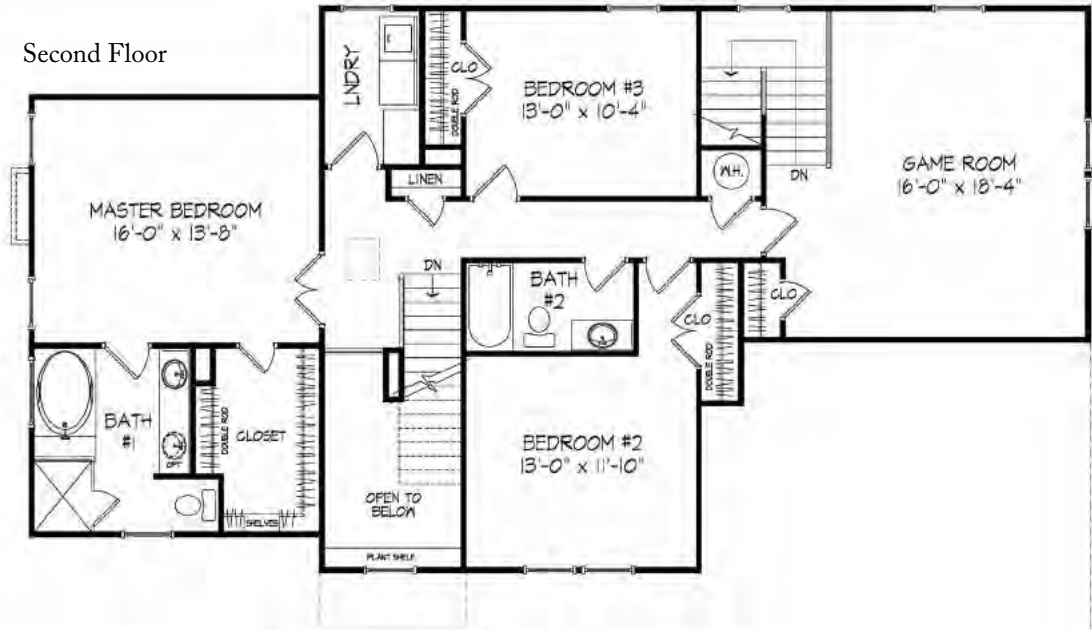


Optional Master Bath #1



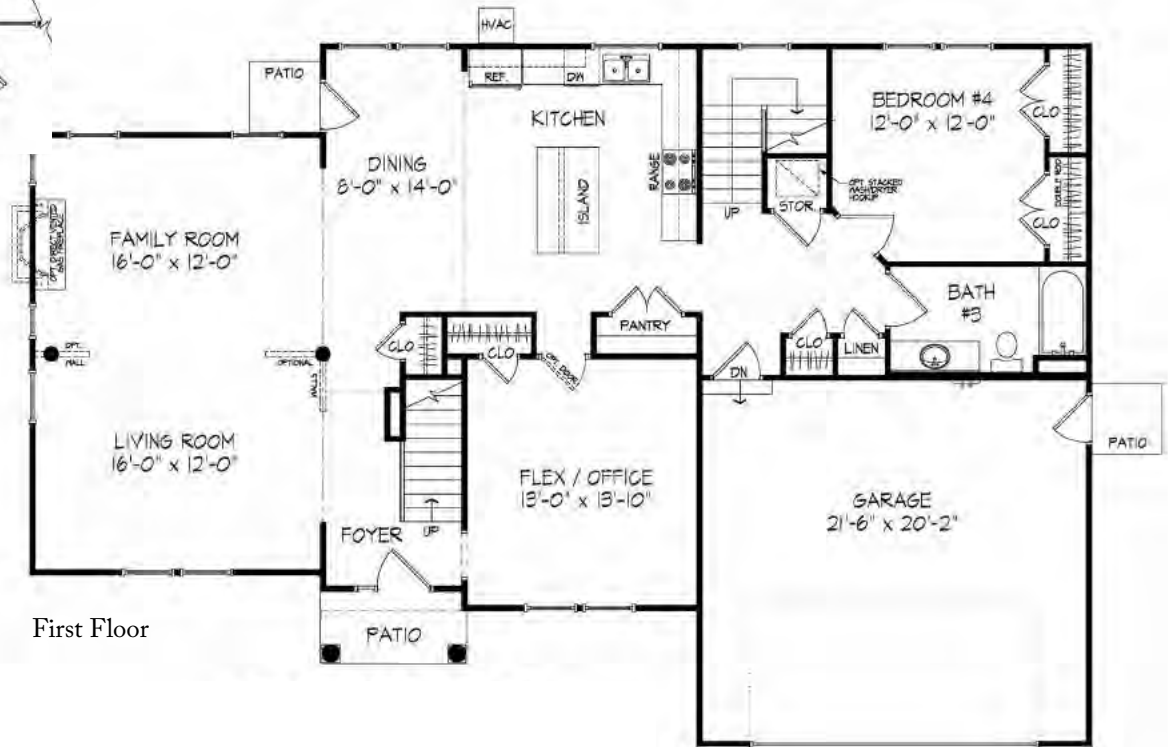
Optional Master Closet Expansion Over Stairs

## Second Floor



Optional Screen Porch

## First Floor



This information is deemed correct at the time of publication, but it is not warranted and is subject to change without notice. Builder reserves the right to modify or change plans, specifications, features and prices without notice. Renderings where shown are an artist's conception only. All dimensions and sizes are approximate.







## *Whistlerwood Model*

### *X-1070 A | The Signature Series*

Master Bedrooms on Both Floors ~ Over 3000 square feet with a large kitchen and dining area that flows into the family and living rooms. A flex/office room is at the front of the home. Upstairs are a game room, 3 bedrooms and 2 baths. Options include a screen porch, a second master bath plan, master closet expansion and laundry room plan.

**Jay Osborough** *direct* (757) 724-4710 | *office* (757) 923-4450  
kffsales@terrypeterson.com | www.kingsforkfarmva.com



*Another fine community by Terry-Peterson Residential. Sales by Rose & Womble Realty*

This information is deemed correct at the time of publication, but it is not warranted and is subject to change without notice. Builder reserves the right to modify or change plans, specifications, features and prices without notice. Renderings where shown are an artist's conception only. All dimensions and sizes are approximate.





# Whistlerwood Model

X-1070

3193 Square Feet

5 Bedroom, 3.5 Baths

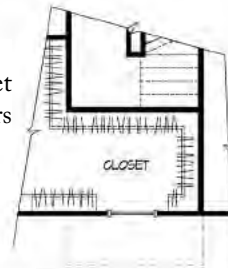


Optional 2nd Floor  
Master Bath

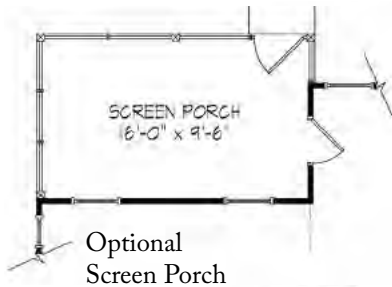


Second Floor

Optional Master Closet  
Expansion Over Stairs



Optional  
Laundry Room



Optional  
Screen Porch



First Floor







## *West Elm*

### *X-1071 B | The Signature Series*

Master Bedroom Down ~ You'll love the way this 5 bedroom, 3.5 bath home flows from one room to the next with upstairs access in front and back of the home. The large kitchen with island and dining area opens to the family room with optional gas fireplace, and the living room is at the front of the home. Use the flex room as a downstairs bedroom or home office. Upstairs are the remaining bedrooms, plus a game room/5th bedroom. Options include a large screen porch as well as optional bath and laundry plan, and master closet expansion.

**Jay Osborough** *direct* (757) 724-4710 | *office* (757) 923-4450  
kffsales@terrypeterson.com | www.kingsforkfarmva.com



*Another fine community by Terry-Peterson Residential. Sales by Rose & Womble Realty*

This information is deemed correct at the time of publication, but it is not warranted and is subject to change without notice. Builder reserves the right to modify or change plans, specifications, features and prices without notice. Renderings where shown are an artist's conception only. All dimensions and sizes are approximate.





# West Elm Model

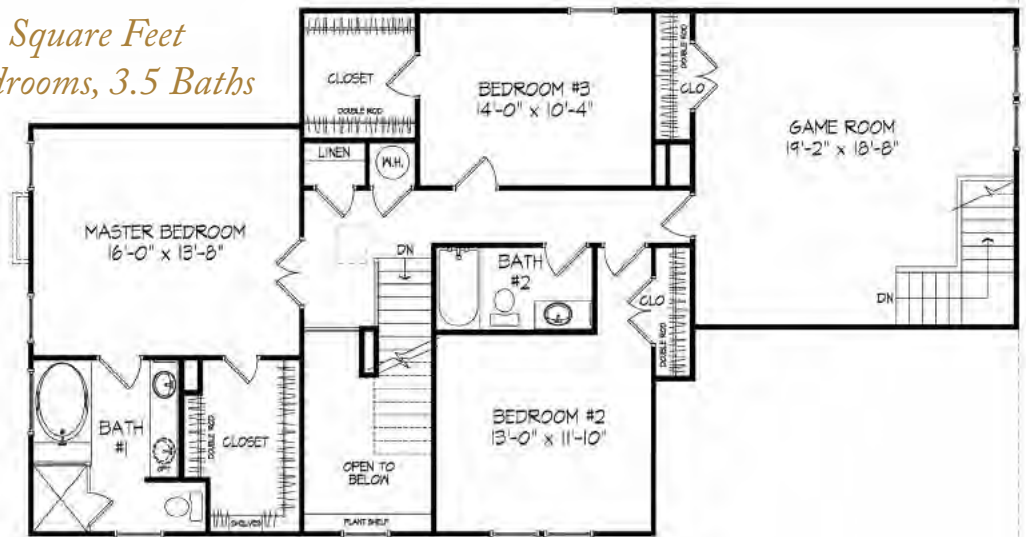
X-1071

3193 Square Feet

5 Bedrooms, 3.5 Baths

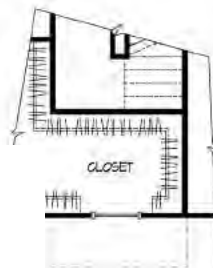


Optional 2nd Floor Master Bath

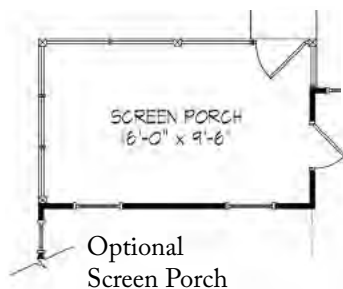
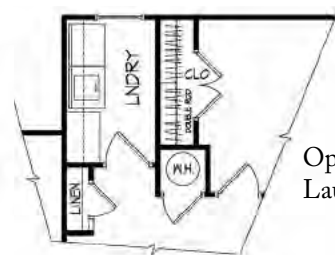


Second Floor

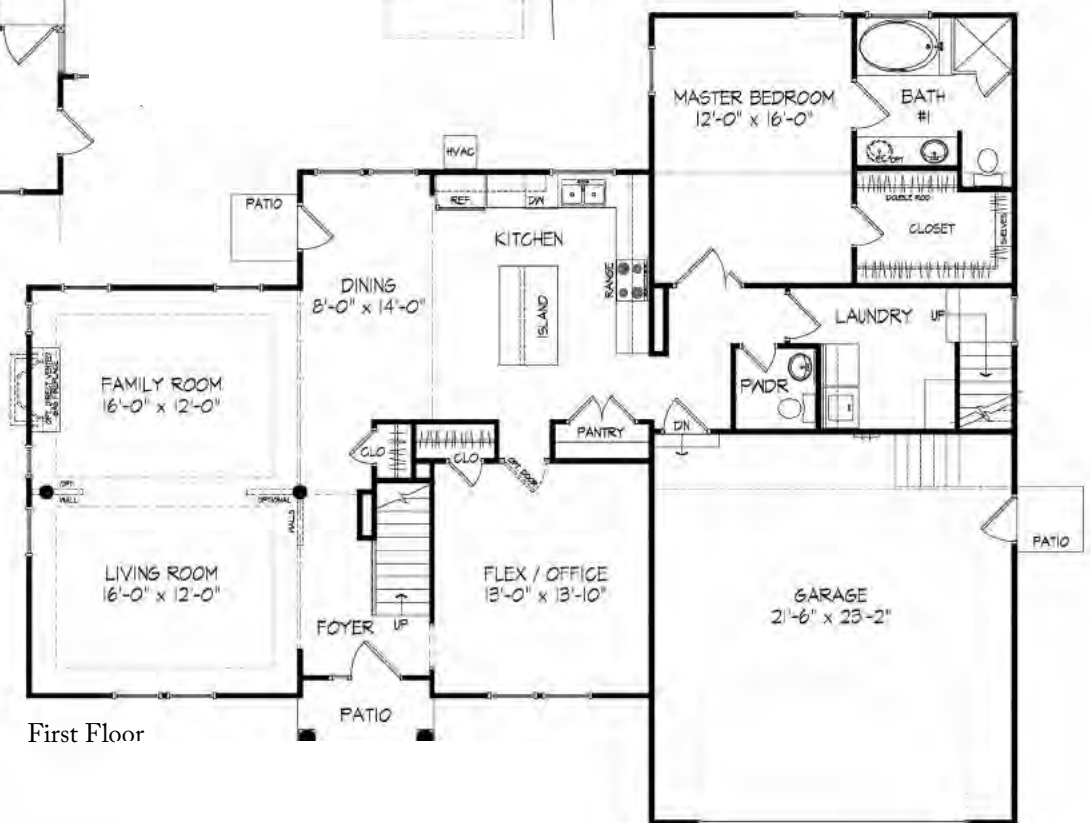
Optional Master Closet Expansion Over Stairs



Optional Laundry Room



Optional Screen Porch



First Floor